



LE BON ERMITE.

ROMANCE.

Musique de A. ANDRADE.

Dédiée à M^{me} DESBORDES VALMORE.

Andante.

PIANO.

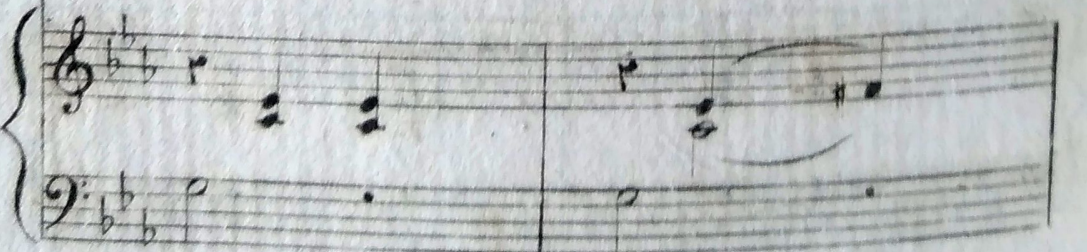
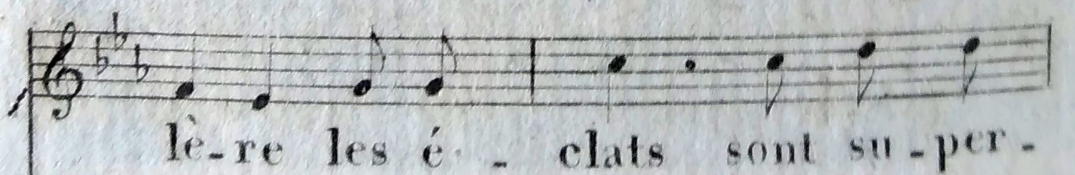
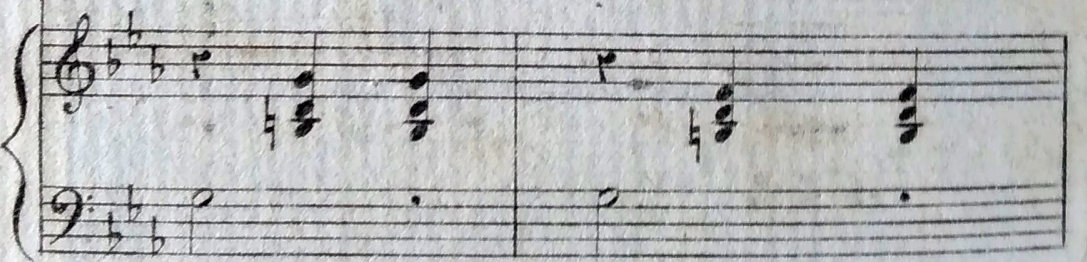
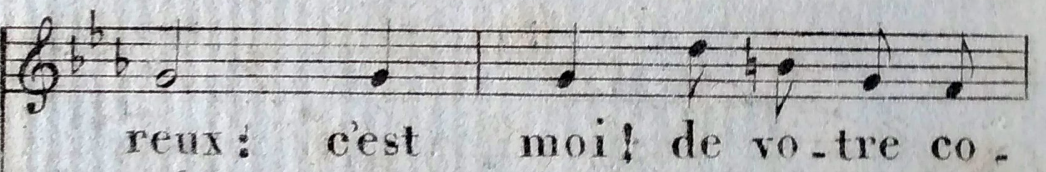
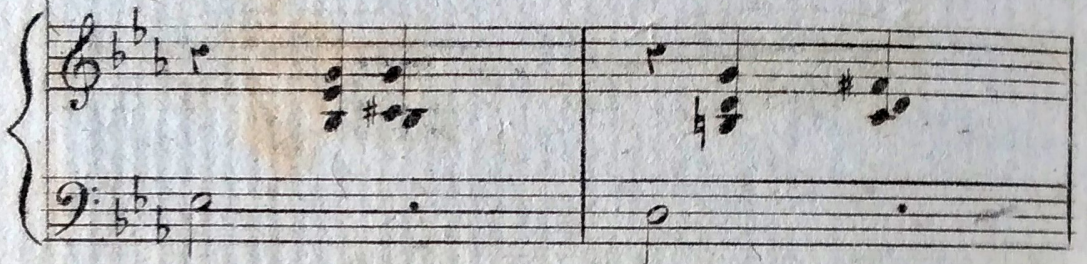
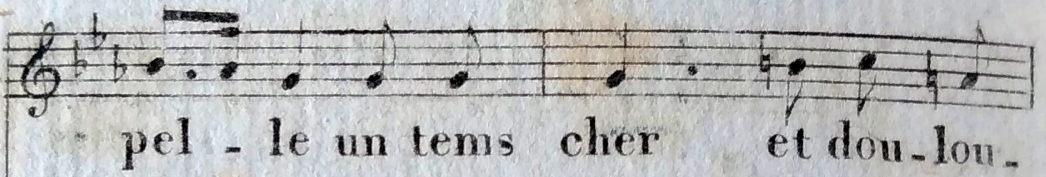
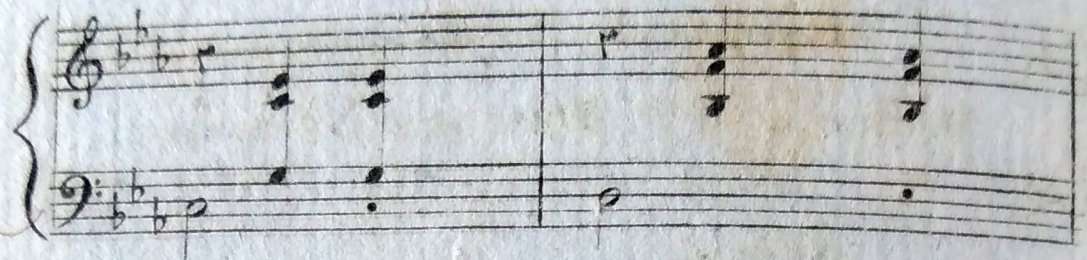
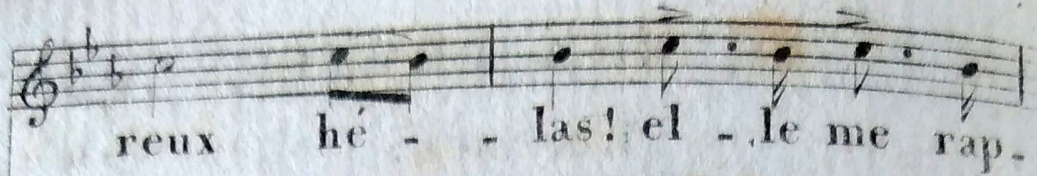
The piano introduction consists of two staves. The right hand starts with a treble clef, a key signature of one flat (B-flat), and a 3/4 time signature. It begins with a forte (f) dynamic and features a series of eighth notes in the first measure, followed by a half note in the second measure, and another series of eighth notes in the third measure. The left hand starts with a bass clef and a piano (p) dynamic, playing a series of eighth notes in the first measure, followed by a half note in the second measure, and another series of eighth notes in the third measure. The piece concludes with a double bar line and a repeat sign.

Er. mi. te, vo. tre cha.

The piano accompaniment for the first vocal line consists of two staves. The right hand starts with a treble clef and a piano (p) dynamic, playing a series of eighth notes in the first measure, followed by a half note in the second measure, and another series of eighth notes in the third measure. The left hand starts with a bass clef and a piano (p) dynamic, playing a series of eighth notes in the first measure, followed by a half note in the second measure, and another series of eighth notes in the third measure. The piece concludes with a double bar line and a repeat sign.

pel. le s'ouvre. - telle aux mal. heu.

The piano accompaniment for the second vocal line consists of two staves. The right hand starts with a treble clef and a piano (p) dynamic, playing a series of eighth notes in the first measure, followed by a half note in the second measure, and another series of eighth notes in the third measure. The left hand starts with a bass clef and a piano (p) dynamic, playing a series of eighth notes in the first measure, followed by a half note in the second measure, and another series of eighth notes in the third measure. The piece concludes with a double bar line and a repeat sign.



plus; un

au - tre que vous m'é-

pp

clai - re, mon

pè - re, il ne m'aime

plus !

mon

pè - re,

mon

pè - re,

il ne m'aime plus !

2.

Cette jeune infortunée
 Que vous maudites un jour,
 Qui devant vous prosternée
 Osa défendre l'amour;
 C'est moi, faible pénitente,
 Tous mes vœux sont confondus;
 Que votre âme soit contente,
 Mon père, il ne m'aime plus!

3.

De cette croix, où je pleure,
 N'exilez pas mes aveux,
 Et vous saurez tout à l'heure,
 Ermite, ce que je veux.
 Quelques pleurs, un peu de cendre,
 Sur ma tombe répandus;
 Oh! qu'il m'est doux d'y descendre!
 Mon père, il ne m'aime plus!

4.

A peine une faible aurore
 Passa sur les jeunes fleurs,
 Que le bon Ermite encore
 Versait la cendre et les pleurs.
 Longtems cet objet trop tendre
 Troubla ses songes confus,
 Et triste, il croyait entendre:
 Mon père, il ne m'aime plus!